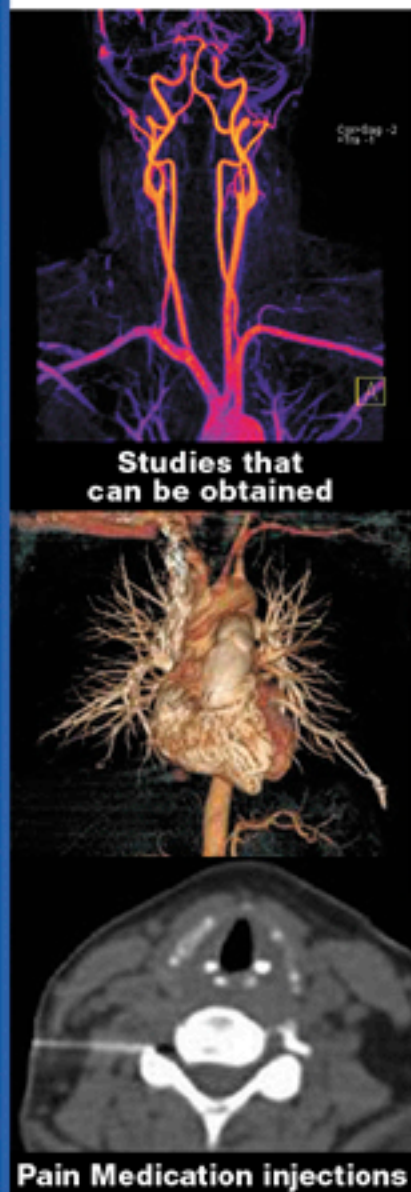


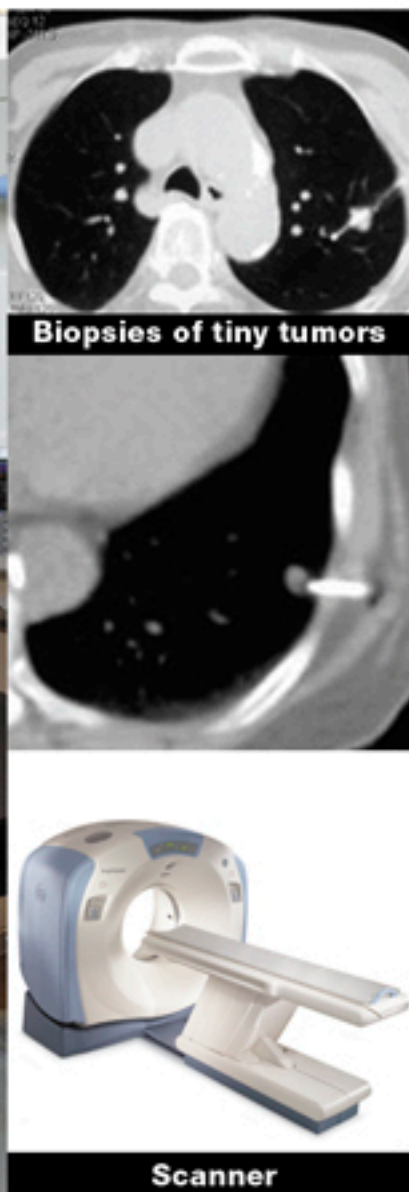


## Endovascular & Minimally Invasive Therapies & Interventional Radiology



Studies that can be obtained

Pain Medication injections



Biopsies of tiny tumors

Scanner

## Flavio Castañeda MD., PA.

Now, with the acquisition of the newest and only Fluoro CT scanner in Laredo, all the procedures can be guided with the latest and most accurate technology available, like the entirety of pain management procedures and medication delivery, biopsies, abscess and fluid collection drainages and will be the only practice to offer CT guided Radiofrequency Ablation of Tumors with the latest and just FDA approved *Microsulis "ACCULIS"* probe ([www.microsulis.com](http://www.microsulis.com)), not available either in San Antonio or Houston, TX yet. This allows for better accuracy, faster procedure performance, less invasiveness, better heat delivery and decreased radiation exposure. No other practice or hospital can surpass our technology, equipment and experience.

Also, this new Scanner can obtain some of the most accurate and sophisticated studies that will be interpreted by specialized and fellowship trained Diagnostic Radiologists in most areas, not just as someone that reads CT's as part of their general Radiology practice.

The continued advancements and incorporation of new equipment and technology makes the set-up and practices of Dr. Flavio and Wilfrido Castañeda, one of the most advanced in South East Texas.

"The Medicare data clearly show that more transfusions and intensive care utilization, longer length of stay, more repeat procedures or amputations and higher costs result when treatment is not performed by Interventional Radiologists" and that's in an inpatient setting. In ours, 100% of the procedures are done on an outpatient basis and with the pre-and-post-procedure care, by dedicated and experienced personnel, free of bureaucracy or prolonged delays and in a caring and compassionate environment. We are all about patient centered care, experience and best procedure outcomes.

Drs. Flavio and Wilfrido R. Castañeda both have over 80 years of experience in performing and teaching these Interventional Radiology Procedures to others, in some of the best academic centers of the world and have performed hundreds of thousands of these procedures, in their careers.

### PROCEDURE LIST

#### VENOUS ACCESS PROCEDURES

- Central Line Insertion
- PICC Insertion (straight or tunneled)
- Temporary Hemodialysis Catheter Insertion
- Groshong Insertions
- Port-A-Cath Insertions
- Tunneled Hemodialysis Catheter Insertion
- Thrombolytic Declotting of Vascular Access
- Antibiotic and venous Infusions

#### VASCULAR DIAGNOSTIC PROCEDURES

- Arteriograms: Thoracic, Abdominal, Cerebral, Cervicocerebral, Carotid, Vertebral, Brachial, Renal, Visceral, Pelvic, Pulmonary, Extremities (upper & lower)
- Venograms: Extremities (upper & lower), IVC, SVC, Renal, Venous Sampling (ex. Renins), Jugular, Hepatic.
- AV Access Care
- Dialysis Access Care

#### VASCULAR INTERVENTIONS

- Peripheral Arterial Disease (PAD)
- Thrombolysis & Infusion Therapy

- Mechanical Thrombectomy
- Percutaneous Transluminal Angioplasty (PTA)
- Intravascular Stents
- Dialysis Access Interventions
- Foreign Body Retrieval
- IVC Filter Placement
- Embolization: (ex. G.I. Bleed, Uterine Fibroids, Trauma)
- Chemoembolization
- Erectile Dysfunction Therapy
- Chronic Cerebrospinal Venous Insufficiency
- Vein Care (Varices, Ablation, Spider Angiomas, Chronic Venous Insufficiency, Telangiectasis)

#### NON-VASCULAR INTERVENTIONS

- Percutaneous Transpathetic Cholangiogram
- Biliary Drainage
- Biliary Stent
- Biliary Stone Removal via tube
- Placement of J-Tube via G-Tube
- Percutaneous Antegrade Pyelogram
- Nephrostomy
- Uteral Dilatation
- Uteral Stent

- Suprapubic Catheters
- Hysterosalpingogram
- Fallopian Tube Recanalization

#### DRAINAGE PROCEDURES

- Fistula or Sinus Tract Study
- Thoracentesis & Paracentesis
- Therapeutic Thoracentesis w/ tube placement
- Therapeutic Paracentesis w/ tube placement
- Chest Tube for pneumothorax
- Abscess Drainages

#### MUSCULOSKELETAL

- Myelograms (cervical, thoracic, lumbar)
- Diskography
- Lumbar Punctures (diagnostic, therapeutic)
- Biopsies
- Arthrography
- Vertebroplasty
- Kyphoplasty
- Vertebral Facet Injections
- Epidural Injections
- Joint, Nerve & Tendon Injections
- Musculoskeletal Pain Management
- Steroid Joint Injections

The practice will now be at its new and only fully dedicated Interventional Radiology outpatient center in Laredo, to better serve our community at:

**6010 McPherson Rd. Ste. 200, Laredo, TX**

The number for procedure scheduling and consultations is: (956) 727-2362. And we will again be performing the entire gamut of Interventional, Endovascular, and Minimally Invasive Therapies. Soon you will be able to visit:

[www.interventionalrad.net](http://www.interventionalrad.net)

for further information of the practice, spectrum of procedures as well as for patient education.